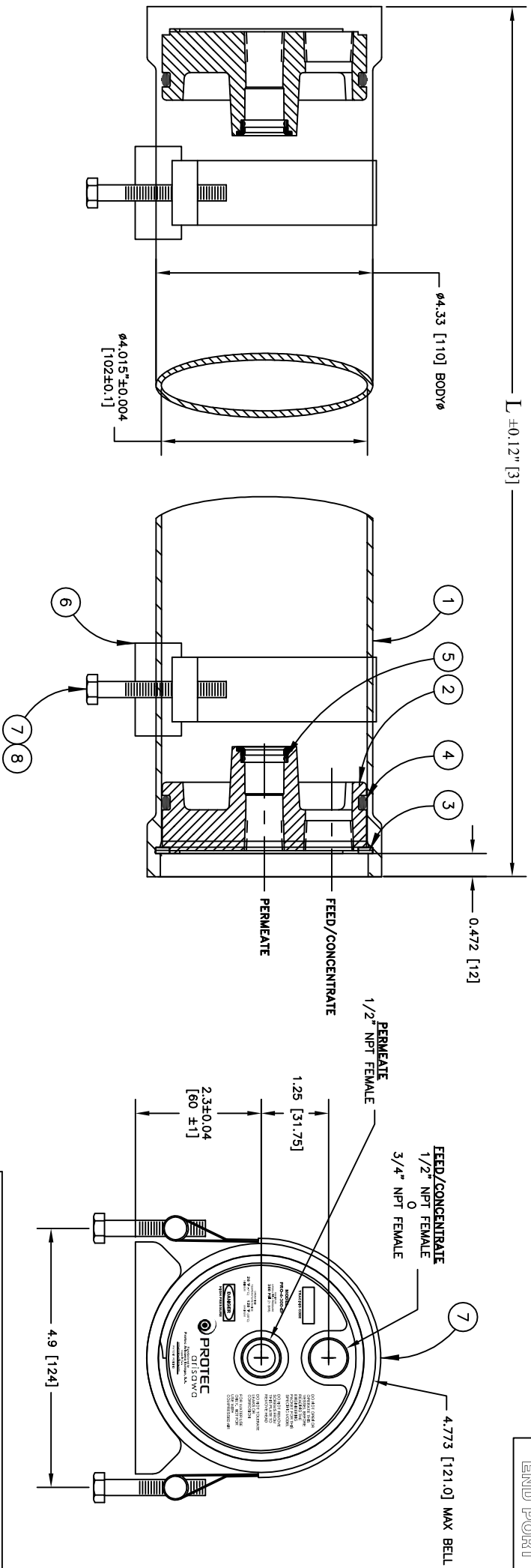


300 PSI
END PORT



Shell Length Code	L		S		Empty Weight (kg)
	Inch (mm)	Span (mm)	Inch (mm)	Lb (kg)	
-1x21"	24.37 (619)	1 @ 15 (381)	1 @ 15 (381)	6.6 (3)	
-1x40"	43.39 (1102)	1 @ 28 (711)	1 @ 28 (711)	11 (5)	
-2x40"	83.39 (2118)	1 @ 56 (1422)	1 @ 56 (1422)	17.6 (8)	
-3x40"	123.39 (3134)	1 @ 80 (2032)	1 @ 80 (2032)	26.5 (12)	
-4x40"	163.39 (4150)	2 @ 64 (1626)	2 @ 64 (1626)	35.3 (16)	
-5x40"	203.39 (5166)	2 @ 78 (1981)	2 @ 78 (1981)	44 (20)	
-6x40"	243.39 (6182)	2 @ 92 (2337)	2 @ 92 (2337)	53 (24)	

ITEM	QTY	P/N	DESCRIPTION	MATERIAL
1	1	4040070	Shell	Flamant Wound, Epoxy/FRP
2	2	4040098-2	End Plug, 1/2" NPT Feed	Nonyl GFN2
3	2	4040098-1	End Plug, 3/4" NPT Feed	Nonyl GFN2
4	2	4040071	Retaining Ring	Stainless Steel, 316 Series
5	2	6180342-N	Plug Seal	Ethylene Propylene
6	4	6180116-N	PWV Seal	Ethylene Propylene
OPTIONAL VESSEL SUPPORT (NOT INCLUDED IN THE PRICE)				
6	2	4040037	Support Saddle	Thermoplastic Rubber
7	2	4040040	Strap Assembly	Stainless Steel, 316L
8	4	6150013	Strap Screw M8x100	Stainless Steel, A4
			Strap Screw 0.312-18 UNC x 2.5	

ENGR	LS	2/04/13	ECO	12194
QTY	LS	2/04/13	REVISED	2/04/13
MRKT	BOA	2/04/13	DRAWING	104003
			REV	M

PROTEC
arisw d

PRO-4-300-EP

DIMENSIONS IN INCH (MM).
FOR REFERENCE ONLY. NOT TO BE USED FOR CONSTRUCTION UNLESS CERTIFIED
CENTER VESSEL ON 2 SUPPORTS AT SPAN "S".
INCORRECT MANIPULATING WILL CAUSE SEVERE LOCAL STRESS AROUND PORT AND MAY RESULT IN LEAKS AND PREMATURE FAILURE. TAKE EVERY PRECAUTION LISTED IN THIS PACKET.
SPECIFICATIONS SUBJECT TO CHANGE WITHOUT NOTICE