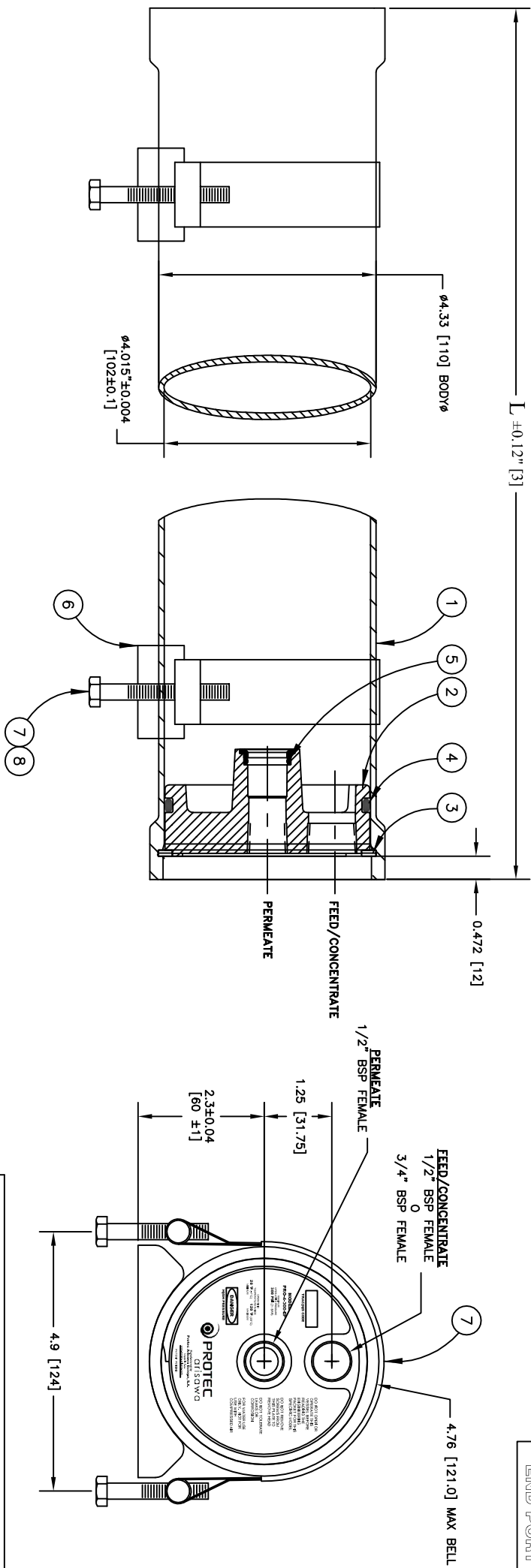



300 PSI
END PORT



Shell Length Code	L Inch (mm)	S Span Inch (mm)	Empty Weight lb (kg)
-1x21"	24.37 (619)	1 @ 15 (381)	6.6 (3)
-1x40"	43.39 (1102)	1 @ 28 (711)	11 (5)
-2x40"	83.39 (2118)	1 @ 56 (1422)	17.6 (8)
-3x40"	123.39 (3134)	1 @ 80 (2032)	26.5 (12)
-4x40"	163.39 (4150)	2 @ 64 (1626)	35.3 (16)
-5x40"	203.39 (5166)	2 @ 78 (1981)	44 (20)
-6x40"	243.39 (6182)	2 @ 92 (2337)	53 (24)

ITEM	QTY	P/N	DESCRIPTION	MATERIAL
1	1	4040070	Shell	Flamant Wound, Epoxy/FRP
2	2	4040098-4	End Plug, 1/2" BSP Feed	Nonyl GFN2
3	2	4040098-3	End Plug, 3/4" BSP Feed	Stainless Steel, 316 Series
4	2	4040071	Retaining Ring	Ethylene Propylene
5	4	6180116-N	Plug Seal	Ethylene Propylene
OPTIONAL VESSEL SUPPORT (NOT INCLUDED IN THE PRICE)				
6	2	4040037	Support Saddle	Thermoplastic Rubber
7	2	4040040	Strap Assembly	Stainless Steel, 316L
8	4	6150013	Strap Screw M8x100	Stainless Steel, A4

ENGR	LS	2/04/13	ECO	12194
MRKT	BOA	2/04/13	REVISED	2/04/13
PRO-4-300-EP		DRAWING	104003	REV
 PROTEC ari sw a				M

DIMENSIONS IN INCH (MM).
 FOR REFERENCE ONLY. NOT TO BE USED FOR CONSTRUCTION UNLESS CERTIFIED.
 CENTER VESSEL ON 2 SUPPORTS AT SPAN "S".
 INCORRECT MANIPULATING WILL CAUSE SEVERE LOCAL STRESS AROUND PORT AND MAY RESULT IN LEAKS AND PREMATURE FAILURE. TAKE EVERY PRECAUTION LISTED IN THIS PACKET.
 SPECIFICATIONS SUBJECT TO CHANGE WITHOUT NOTICE